

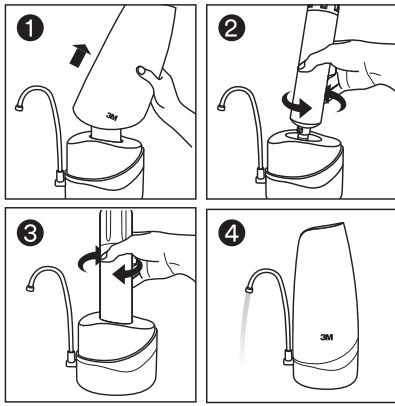
## Filter cartridge replacement instructions

1 Remove cover.

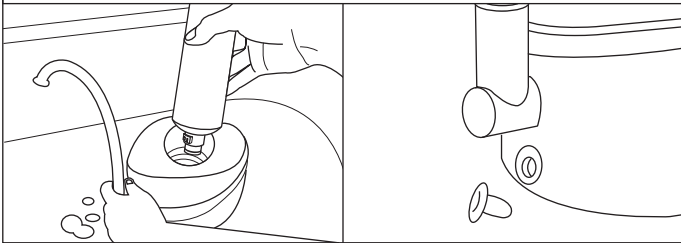
2 To release the old filter cartridge from the filter base, give the cartridge a ¼ twist in an anti-clockwise direction.

3 To install the new filter cartridge on the filter base, give the cartridge a ¼ twist in a clockwise direction.

4 Flush the system for one full minute to remove any trapped air.



**Note:** During filter replacement, it's normal for residue water to flow out from insert at water filter base after the old cartridge is removed.



## Troubleshooting

### Water leaks at diverter:

Tighten it a little until the leak stops. If leaks persist, shut off water, remove diverter and check the position of washer. Replace with new washer (if necessary) and re-install back diverter to the faucet.

### Water leaks at tubing connections:

Push the tubing in as far as it will go. If there is still leakage, shut off water and remove the water line by pushing in on the connector collet while pulling the tubing away (see Quick Connect Guide). Inspect the tubing for cracks and scratches. If the tubing is cracked or scratched, cut off the cracked or scratched portion and reinsert tubing into quick connect fitting.

### Water does not flow from the appliance:

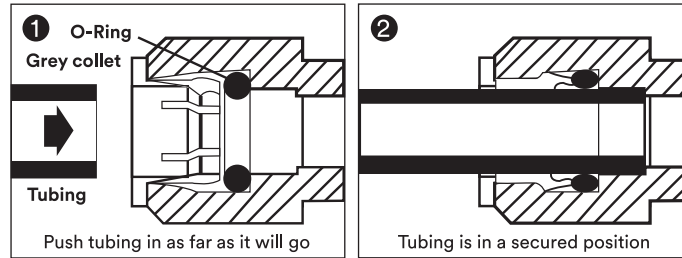
Check to see if the original water line valve is open and ensure that the water supply valve is in the open position. If water still does not flow, replace the filter cartridge and water flow should resume as normal.

### Water appears cloudy or air comes out of the system:

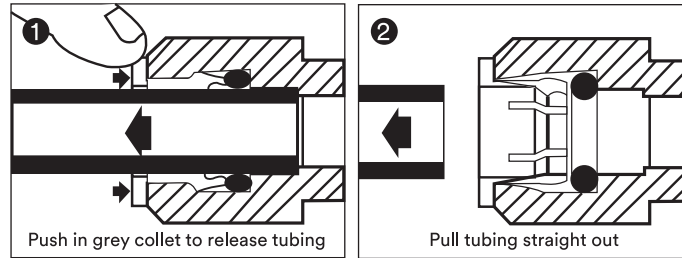
Flush the filter for one full minute to remove any trapped air in the filter and water lines.

## Quick connect guide

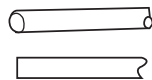
To attach tubing



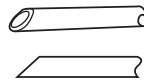
To release tubing



Correct



Incorrect

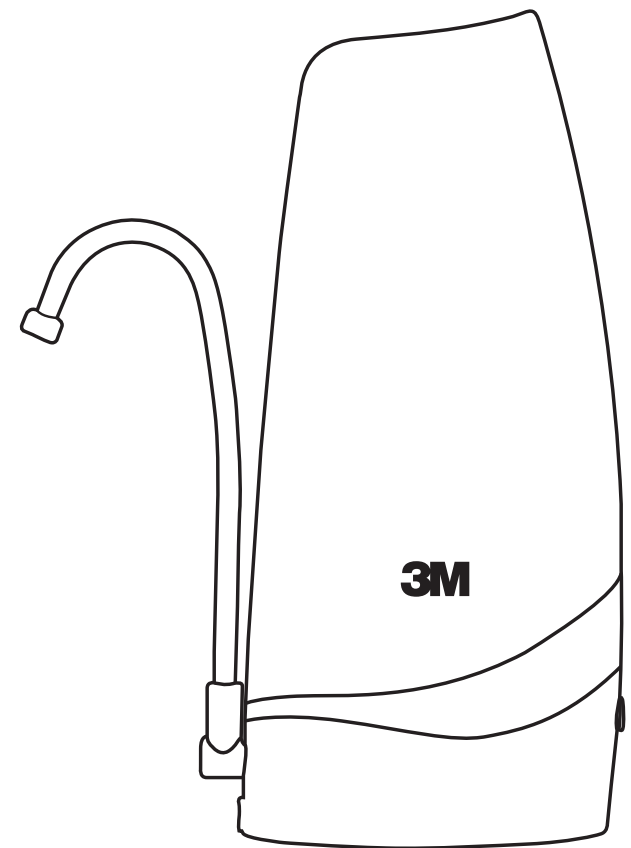


**3M**

Separation and Purification Sciences Division  
3M Thailand Limited  
12th Floor, Serm-Mit Tower  
159 Asoke-Montri Road  
Klongtoey Nua, Wattana, Bangkok 10110  
0-2260-8577 Fax 0-2261-7535  
www.3m.com/th, www.facebook.com/3Mthailand

**3M** Science.  
Applied to Life.™

## Installation & operating instructions for Countertop Drinking Water System CTM-02



Owner's note: Please retain instruction for future operation and maintenance.

3M Countertop Drinking Water System CTM-02 Manual Guide  
Open Size: 300mm x 210mm H  
Closed Size: 100mm x 210mm H

## Safety information

Read, understand, and follow all safety information contained in these instructions prior to installation and use of the Countertop Drinking Water System CTM-02. Retain these instructions for future reference.

### Intended use:

The Countertop Drinking Water System CTM-02 is intended for use in filtering potable water in homes and has not been evaluated for other uses.

### Explanation of signal word consequences



**Warning**

Indicates a potentially hazardous situation, which, if not avoided, could result in death or serious injury and/or property damage.



**Caution**

Indicates a potentially hazardous situation, which, if not avoided, may result in property damage.

### Warning

To reduce the risk associated with ingestion of contaminants:

- Do not use with water that is microbiologically unsafe or of unknown quality without adequate disinfection before or after the system.

To reduce the risk associated with a hazardous voltage:

- Do not install near electric wiring or piping which may be in the path of a drilling tool when selecting the position to mount the filter bracket.

### Caution

To reduce the risk associated with property damage due to water leakage or flooding:

- Read and follow all instruction before installation and usage of this system to reduce the risk of water leakage or flooding and to ensure optimal filter performance;

- Installation must comply with existing state or local plumbing codes;
- Install on cold water lines only;
- Protect filter from freezing. Drain filter when room temperature drops below 4.4°C (40°F);
- Do not install if water pressure exceeds 125 psi (862 kPa). If your water pressure exceeds 125 psi, you must install a pressure limiting valve. Contact a plumbing professional if you are uncertain on how to check your water pressure;
- Do not install where water hammer conditions may occur. If water hammer conditions exist you must install a water hammer arrester. Contact a plumbing professional if you are uncertain on how to check for this condition;
- Do not install on hot water supply lines. The maximum operating water temperature for water running through this filter system is 38°C (100°F);
- Position the filter system in such a way to prevent it from being struck whilst being used in the area of installation;
- Do not install in direct sunlight;
- Do not use torch or other high temperature sources near the filter or plastic cartridge.

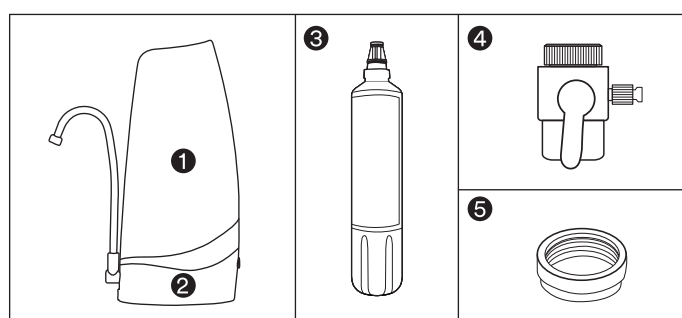
## Important notes

- Failure to follow instructions may void warranty.
- Install with the inlet and outlet ports as labeled. Make sure not to reverse the connections.

## Getting started

### Parts & materials included:

- 1 Water filter casing 3 Filter cartridge 5 Faucet adapter (if required)  
2 Water filter base 4 Diverter



**Note:** This product is suitable for female thread or male thread faucet, suggest to get adaptor / aerator for other special faucet.



## Filter cartridge replacement

Change the disposable filter cartridge every six (6) months or sooner if you observe a noticeable reduction in water flow rate. Local water conditions and actual volume of water can affect filter cartridge life and replacing it is recommended if a noticeable drop in pressure occurs at the faucet.

## Installation instructions

For use with cold water only. Before installing, turn off water supply on the cold water line.

### 5 easy steps of installation:

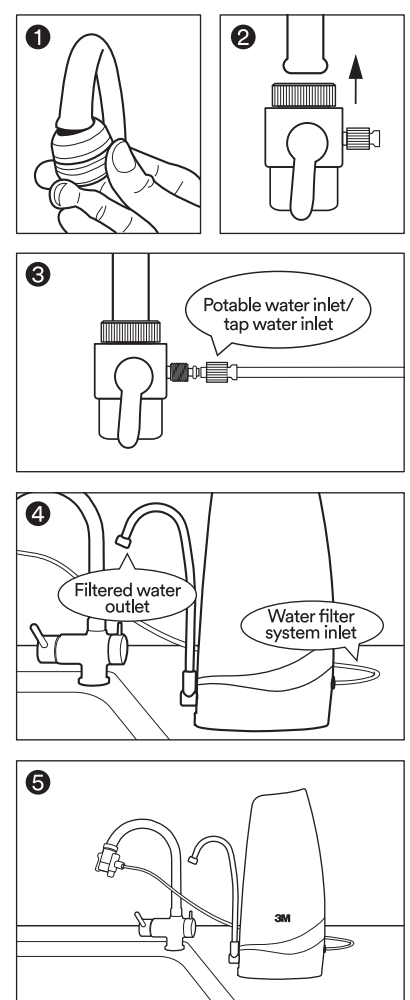
1 Remove the faucet cap & washer.

2 Connect the diverter to the faucet.

3 Twist to unscrew the diverter tube cap, run the tubing pass through the tube cap then insert the tubing into the diverter connector and screw the tube cap back on.

4 Connect tap water inlet tubing into water filter system inlet.

5 Tighten up the diverter with a spanner to complete the installation. Turn on the water supply to flush the system for one full minute to remove any trapped air then close the faucet to check for leaks.



3M Countertop Drinking Water System CTM-02 Manual Guide  
Open Size: 300mm x 210mm H  
Closed Size: 100mm x 210mm H